

**Victor Padilla-Taylor**  
**Director of Networks**

**Yale**

**tsai center for  
innovative  
thinking**



**DOWNLOAD  
OUR 2021  
SUBMISSION**





tsai center for  
innovative  
thinking  
at yale



# Every student's pathway is unique



**Entrepreneur**



**Intrapreneur**



**Creative**



**Civic Innovator**



**Explorer**

tsai center for  
innovative  
thinking  
at yale

OUR MULTIPLE  
STUDENT  
PATHWAYS



# Mentor diversity is needed to build mentoring capacity



# Mentor capacity help us build bridges to innovative skills



**G** is for **goals**

**R** is for **reality**

**O** is for **options**

**W** is for the **way forward**

Adapted from John Whitmore (1992)



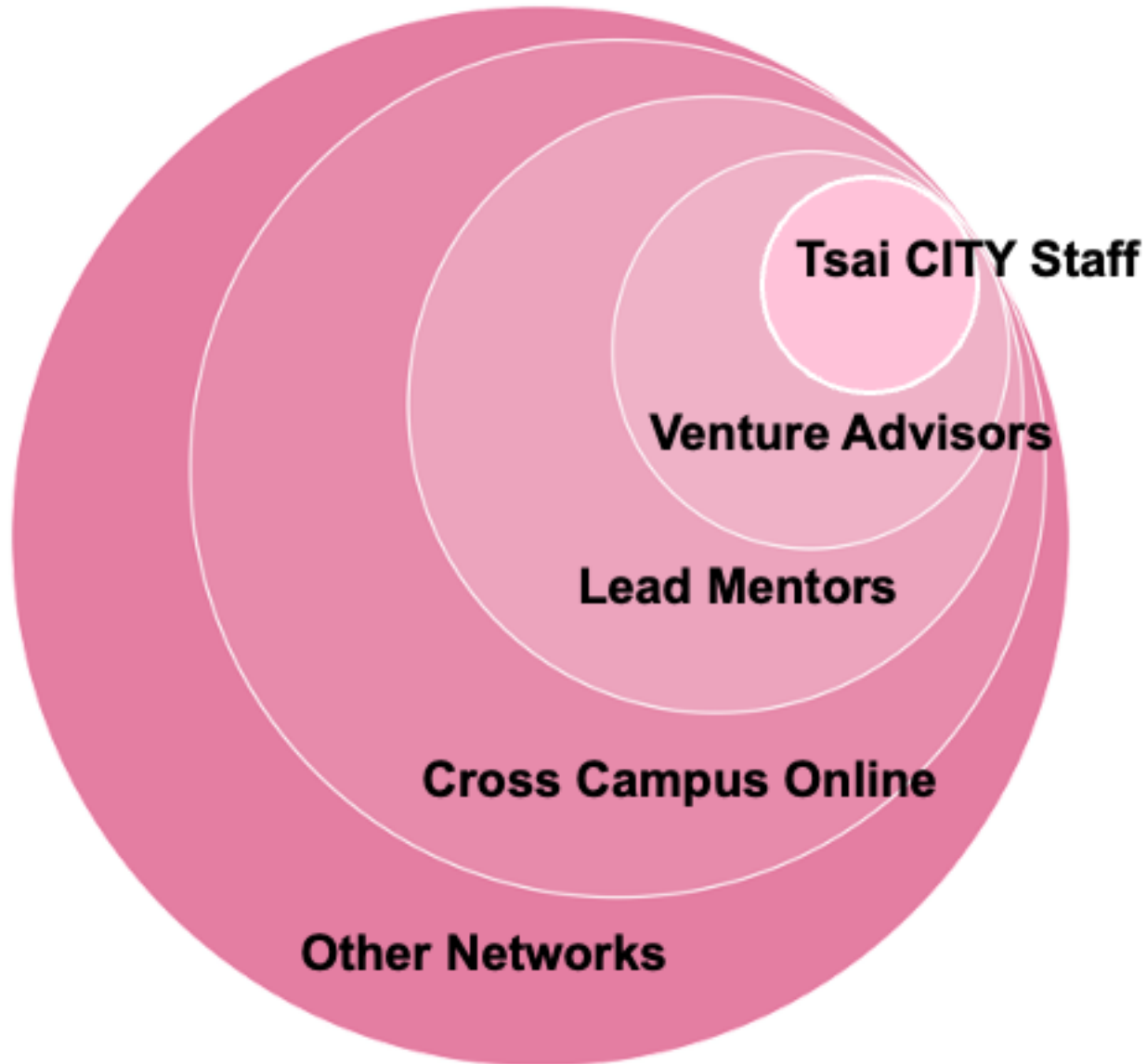
# What has attracted our alumni?

## Three secret ingredients:

1. It's fluid and layered
2. It's on campus, on line,  
and on the road
3. It's about lifelong learning



# The best mentor isn't a single person

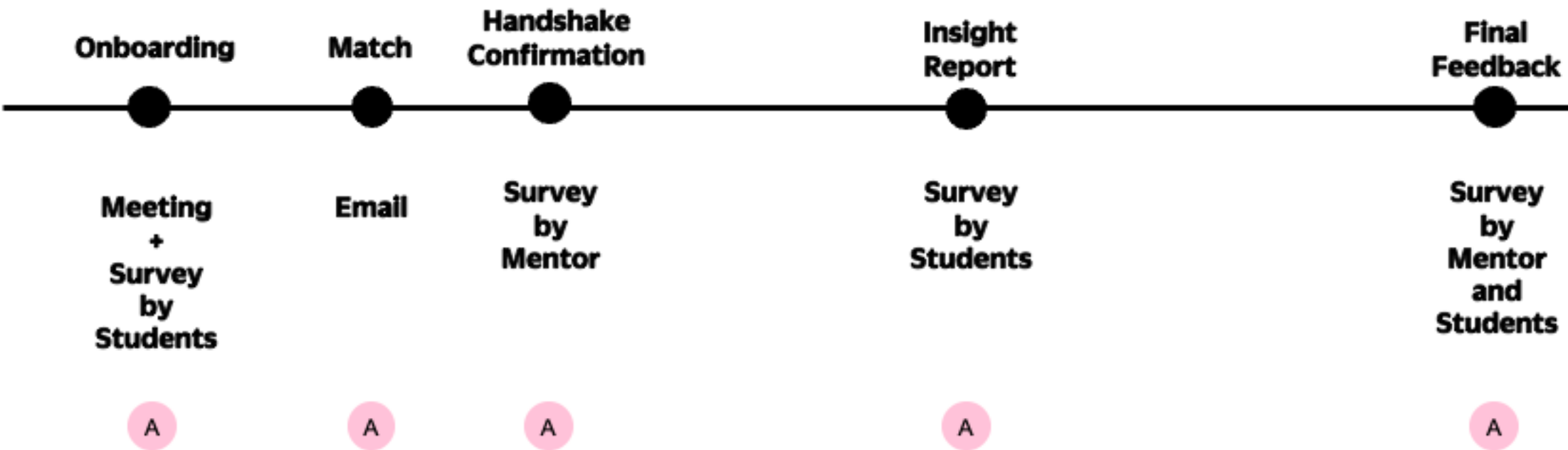


**500** experienced founders, young and senior executives who advise growing student ventures.

**+6000** mentor introductions since 2020 to students, *on campus, online, and on the road*

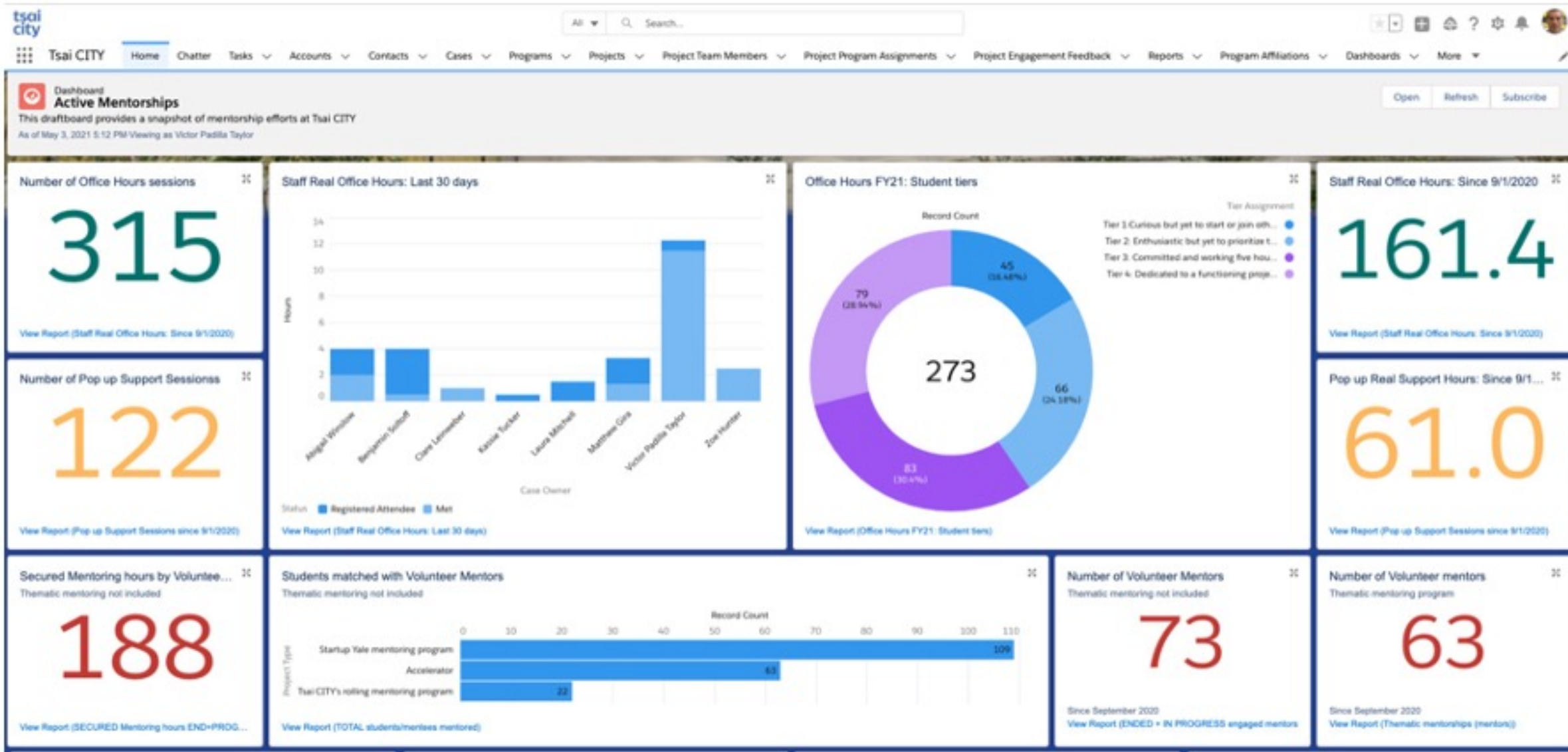
# Sample Mentoring Timeline with Automations

Salesforce automations = A





# Dashboards powered by affiliation objects and integrations with external tools



**Example:** Track students' Affiliations with an Academic Program Account like B.S. in Biology or to a Sports Organization Account like Women's Soccer Team. Track faculty Affiliations with a University Department like the Biology Department.

# Alumni on campus, online & on the road



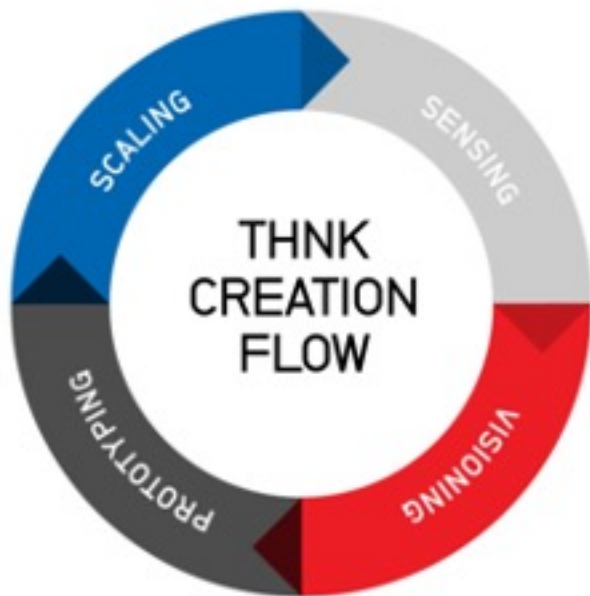
## TRAVEL in partnership with Yale Alumni Association



*Coming to a Location Near You!!*

## EYE OPENERS

## ⇒ Designing for life-long learning



 SCHOOL OF  
CREATIVE  
LEADERSHIP

## SEARCHING FOR YES

123?

## BOULDERS & BRIDGES



## BOULDERS & BRIDGES

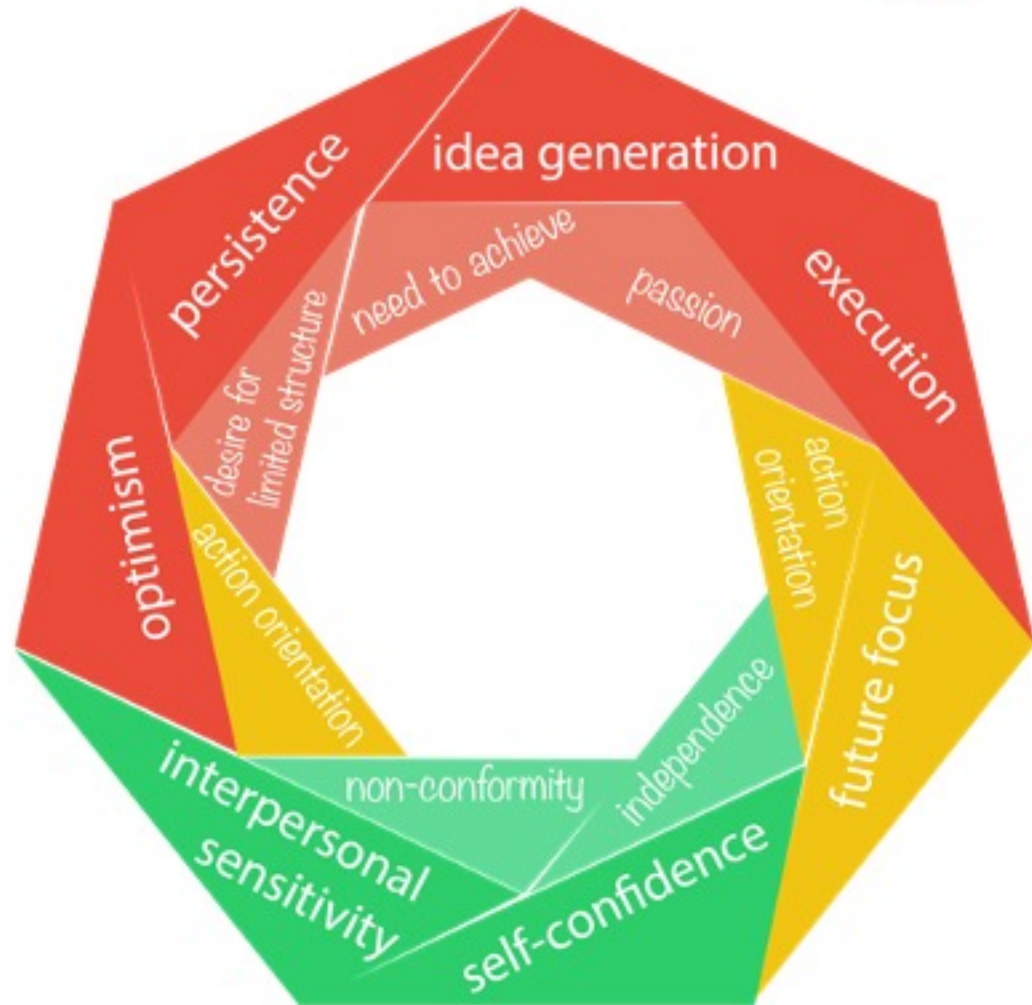


## FLIPCHART ISLANDS





# Coaching for Founders



## ① SURFACE LAYERS

- What can be learned?

*Skills and competencies  
= The What and the How*

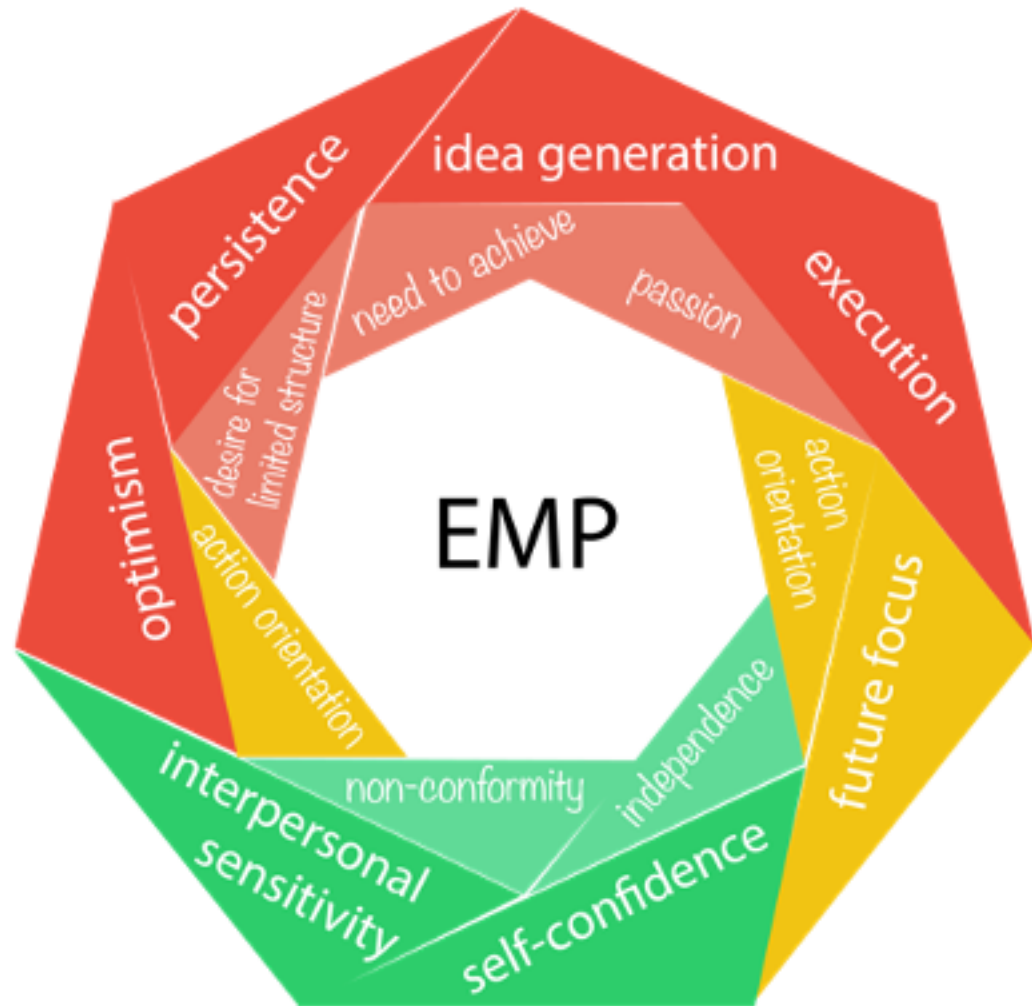
## ② INTERIOR LAYERS

- What comes naturally?
- What can be discovered?

*Personal characteristics  
= The Who and the Why*

NEW IN  
2023

# Entrepreneurial Mindset (EMP)



③ WE WILL GIVE AWAY FREE ASSESSMENTS DURING A PILOT PHASE starting Spring 2023, if you are curious to learn:

***Where are you 'hot' at?***

***Where are you still 'green'?***



ENTREPRENEURIAL  
MINDSET PROFILE®  
INSPIRE ACTIVATE UNLEASH

# Let's collaborate!

**Victor Padilla-Taylor**  
Director of Networks

WEBSITE [city.yale.edu](http://city.yale.edu)

NEWSLETTER [bit.ly/citymailinglist](http://bit.ly/citymailinglist)

FACEBOOK [@TsaiCenterforInnovativeThinking](https://www.facebook.com/TsaiCenterforInnovativeThinking)

TWITTER [@TsaiCITY](https://twitter.com/TsaiCITY) and [@elithought](https://twitter.com/elithought)

INSTAGRAM [@tsaicity](https://www.instagram.com/tsaicity)

LINKEDIN [www.linkedin.com/company/tsai-city](http://www.linkedin.com/company/tsai-city)